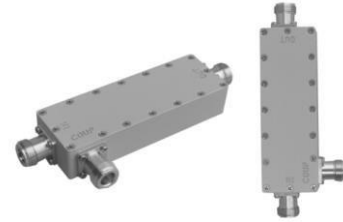


Directional Coupler 698 - 2700 MHz, 5,6,7,10,15dB

Product Description

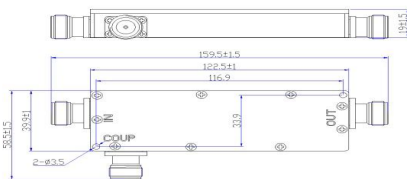
The Series of Low-PIM Power Coupler are designed for providing low PIM and low insertion loss solution for the multi standards or multi operators in DAS systems

- Wide frequency band: 698 to 2700MHz
- High power capacity
- Low insertion loss and low PIM
- Application for indoor and outdoor using

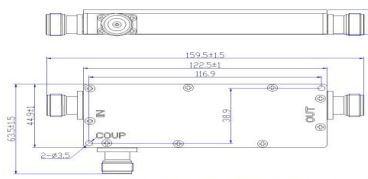


Specifications

Product Name	C5	C6	C7	C10	C15	C20	C30	C40
Specifications	5.0 dB	6.0dB	7.0 dB	10dB	15dB	20dB	30 dB	40 dB
Attenuation	±1				±1.2		±1.5	
Insertion loss(dB)	≤2.15	≤ 1.7	≤1.4	≤ 0.8	0.5	0.5	0.3	0.3
Isolation	≥25	≥26	≥27	≥30	≥35	≥40	≥48	≥56
Weight	0.25kg							
Dimension	159.5*58.5*19mm/159.5*63.5*17.5mm							
Frequency range	698 - 2700 MHz							
Intermodulation (3rd order)	-150/155/160dBc @ 2 x 43dBm							
Power capacity	≤300 W							
VSWR	≤1.25							
Impedance	50 Ω							
Operating temperature	-25°C to +75 °C							
Storage temperature	-40°C to +85 °C							
Relative humidity	0~95%							
Ingress protection	IP65							
RF Connector	N-Female							



N-F 5,6,7,8,10dB



N-F 13,15,20,30,40dB